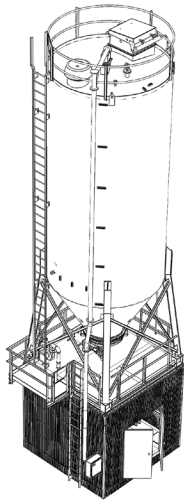


STANDARD HYDRATED LIME AND SODA ASH FEED SYSTEM IN A BOX



INTEGRATED SILO, FEED, AND DUST COLLECTION SYSTEM IN A BOX

The standard hydrated lime and soda ash feed system from STT provides an integrated solution for receiving, storing, feeding, and delivering up to 2,500 lbs/h of hydrated lime or soda ash from truck to the point of application. The two-piece modular design includes a 12 ft. storage silo with a bin vent filter and a slurry make down/storage tank with mixer module on the lower level.

STT assembles, installs, pipes, wires, and integrates all components/equipment through an automated control panel at our facility prior to shipment. The pre-insulated modular box is shipped upright on a skid and fits on a conventional truck minimizing shipping costs. The upper storage silo module is shipped separately for simple connection at site.

TYPICAL BULK MATERIALS PROCESSED

- Hydrated Lime
- Soda Ash

TYPICAL APPLICATIONS

- Water Treatment
- Chemical Processing
- Mining
- Oil and Gas
- Pulp and Paper / Precipitated Calcium Carbonate (PCC)

FEATURES

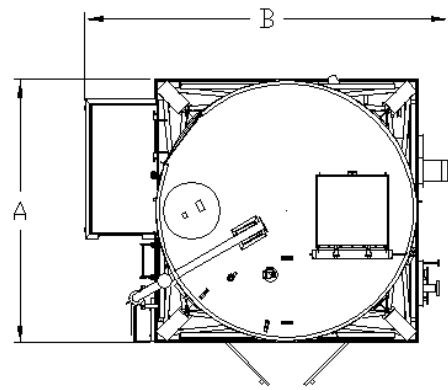
BENEFITS

Compact "system-in-a box"	Saves money and decreases equipment footprint enhancing plant utilization
Fully engineered and integrated silo, feed, and dust collection system	Receives, stores, feeds, and delivers dry chemicals to application point, optimizing material handling
Pre-assembled, piped, wired and factory tested	Reduces installation costs and commissioning time ensuring a seamless start-up
Modular 'plug-and-play' design	Minimizes the amount of onsite assembly required saving on labor costs
12' square (box) footprint	Requires no pilot car to transport with 25% more space than conventional 12' silos, optimizing equipment footprint
Single-piece welded silo construction (14'-0" in diameter)	Ships preassembled limiting the amount of onsite construction needed
Low-profile, top access, bin vent filter mounted on roof	Minimizes dust emissions improving air quality and employee safety
Skirted interior lighting, ventilation, heating and insulation	Use in cold temperature regions provides flexibility in using similar systems across multiple locations
Complete automatic control system with PLC	Improves productivity limiting downtime adding value to the bottom line
Slurry make down/storage tank with mixer	Combines dry chemical and water, making and storing slurry or solution at the desired concentration
Equipment module shipped up-right	Reduces the chance for damage during shipment for faster installation and start-up

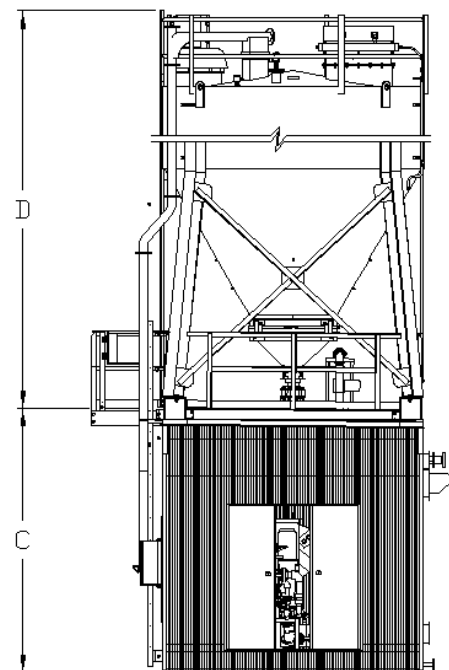
AVAILABILITY

	A (in. [mm])		B (in. [mm])		C (in. [mm])		D (in. [mm])							
							Silo Storage Capacity							
	2800 ft³ [79.3 m³]		3600 ft³ [101.9 m³]		4200 ft³ [118.9 m³]		4800 ft³ [130.3 m³]							
Mixing System	144	[3658]	200	[5080]	145 1/2	[3696]	465	[11811]	501	[12726]	537	[13640]	573	[14555]

PLAN VIEW



ELEVATION VIEW



BASIC SILO COMPONENTS

- Storage Silo c/w Truck Fill Line and Pressure/Vacuum Relief Manway
- OSHA Ladder c/w Safety Climbing Protection System
- Bin Vent Filter
- Fluidization System
- Bin Activator

ROOF MODULE

- Isolation Knife Gate
- Volumetric Feeder
- Forced Draft Wet Scrubber Blower

LOWER MODULE

- Mixing Tank
- Mixing Tank Agitator
- Forced Draft Wet Scrubber
- Slurry Transfer Pumps or Solution Dosing Pumps
- Piping Spools for Air, Water and Slurry / Solution Tie-Ins
- Lighting, Ventilation, Heating and Insulation
- Main PLC Control Panel
- Silo Fill Panel
- Motor Starter Panel

NOTE: Information / dimensions shown are for reference only and is subject to change based on final design and applications.

SPECIFICATIONS

HYDRATED LIME SYSTEM

- Storage Silo Capacity:** 2,800 to 4,800 ft³ [79 to 136 m³]
- Lime Throughput:** 2,646 lb/h [1,200 kg/h] of hydrated lime @ 36 lb/ft³ [577 kg/m³]
- Slurry Concentration:** Up to 20%
- Feeder:** Operates at variable speed for batch or continuous operation
- Storage Tank Capacity:** 587 USgal [2.2 m³]
- Dust Suppression System:** 113 CFM [192 m³/h] at 0.28 in [7 mm] w.c.
- Transfer Pumps:** 50 USgpm [11.4 m³/h] at 50 ft [15.2 m] TDH
- Process / Utility Requirements**
 - Mixing Water: Hydrated Lime: 19.7 USgpm [4.5 m³/h] at 40 psig [276 kPag]
 - Electrical Load: 38 kW (3Ø) and 7.2 kW (1Ø)
 - Instrument Air: Dry, oil-free, 67 CFM [114 m³/h] at 120 psig [827 kPag]

SODA ASH SYSTEM

- Storage Silo Capacity:** 2,800 to 4,800 ft³ [79 to 136 m³]
- Soda Ash Throughput:** 1,012 lb/h [459 kg/h] of soda ash @ 55 lb/ft³ [881 kg/m³]
- Solution Concentration:** Up to 5%
- Storage Tank Capacity:** 587 USgal [2.2 m³]
- Dosing Pumps:** Up to 9 USgpm [2 m³/h] at 50 ft [15.2 m] TDH
- Electrical and Instrumentation Approval:** CSA, FM, cUL_{US}, CE Marking
- Process / Utility Requirements**
 - Mixing Water: Soda Ash: 41 USgpm [9.1 m³/h] at 40 psig [276 kPag]
 - Electrical Load: 38 kW (3Ø) and 7.2 kW (1Ø)
 - Instrument Air: Dry, oil-free, 67 CFM [114 m³/h] at 120 psig [827 kPag]

OPTIONS

- Upgrade primary equipment's material of construction to 304 or 316 Stainless Steel
- Air compressor module – to supply compressed air to equipment/instrument in the systems

MATERIAL OF CONSTRUCTION / PAINT SPEC

- Storage Silo:**
 - Material: Carbon Steel
 - Surface Preparation: SSPC SP6
 - Exterior:
 - Primer: Sierra Paint, solvent based enamel
 - Finish: Sierra Paint solvent based enamel, 2-3 mils DFT
 - Finish Color: RAL 70378 Grey or RAL 9010 White
- Slurry / Solution Tank and Modular Structural Box:**
 - Material: Carbon Steel
 - Surface Preparation: SSPC SP6
 - Exterior:
 - Primer: Carboline Carbomastic 615, 3-4 mils DFT
 - Finish: Carboline Carboxane 2000, 3-4 mils DFT
 - Finish Color: RAL 7012 Basalt Grey or RAL 9003 White
- Tank Mixer:**
 - Material (shaft and impeller): 304 Stainless Steel
- Slurry Pump:**
 - Material (casing and impeller): Cast Iron with High Chrome
- Solution Pump:**
 - Material: (body) Cast Iron, (hose) NBR
- Piping:**
 - Instrument Air: Galvanized Carbon Steel (interior), 304/304L Stainless Steel (exterior)
 - Water Piping: Galvanized Carbon Steel
 - Slurry: Chlorinated Polyvinyl Chloride (CPVC)
 - Solution: PVC



OUR NAMES HAVE CHANGED. OUR COMMITMENT TO QUALITY REMAINS.



IMPORTANT NOTICE

The information contained in this product data sheet is, to the best of our knowledge, true and accurate. As application-specific factors may impact performance, users are advised to evaluate the product independently to determine suitability for the intended application and use conditions. Product availability and specifications are subject to change without notice.

LET US HELP PROVIDE A SOLUTION FOR YOUR NEEDS.

For over 50 years, STT has been designing and installing lime slaking and bulk material handling systems. What makes STT different is our diverse experience in many applications, industries and chemicals, along with the ability to support systems from concept through to decommissioning, and everything in between. To speak with one of our experts, contact us at:

SALES@STTSYSTEMS.COM

+1-905-875-5587 • STTSYSTEMS.COM

CANADIAN HEAD OFFICE:
8485 PARKHILL DRIVE
MILTON, ON L9T 5E9, CANADA

US HEAD OFFICE:
3600 NEVILLE ROAD
PITTSBURGH, PA 15225

